



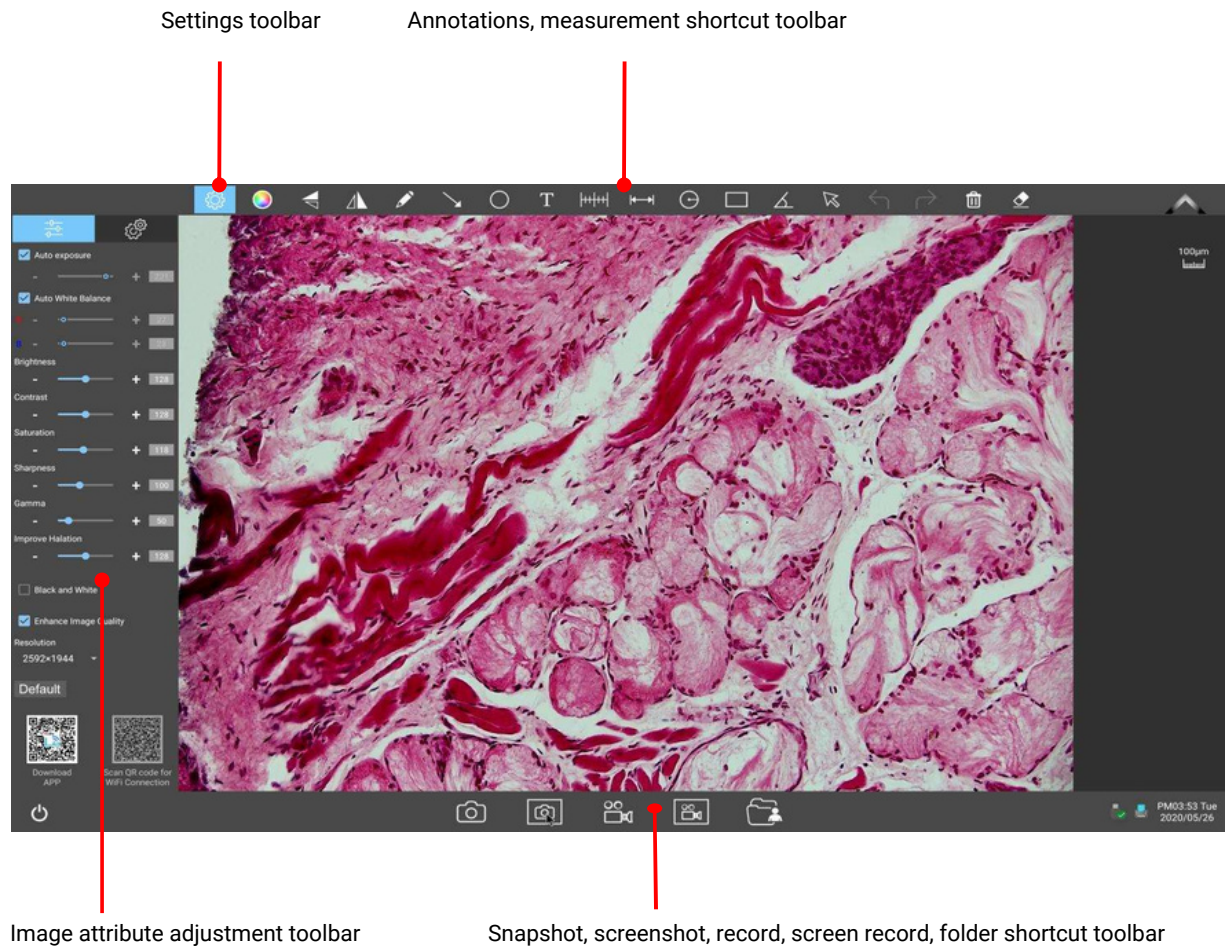
# KoPa WiFi Lab AO APP

# **User's Manual**



# Content

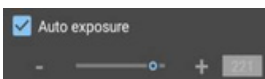
<b>1. OPERATION INTERFACE</b> .....	- 1 -
<b>2. IMAGE ATTRIBUTE ADJUSTMENT TOOLBAR</b> .....	- 1 -
<b>3. SETTING PANEL</b> .....	- 1 -
<b>4. ANNOTATIONS, MEASUREMENT SHORTCUT TOOLBAR</b> .....	- 2 -
4.1 Shortcut buttons .....	- 2 -
4.2 Calibration and measurement .....	- 2 -
<b>5. SNAPSHOT, SCREENSHOT, RECORD, SCREEN RECORD, FOLDER SHORTCUT TOOLBAR</b> .....	- 3 -
<b>8. FOLDER MANAGEMENT</b> .....	- 7 -

# 1. Operation Interface



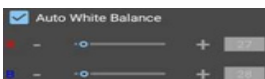
## 2. Image Attribute Adjustment Toolbar

Click the setting button  in the upper left corner of the operation interface, the image attribute adjustment panel  will be brought up.



### Auto exposure

When checked, the camera will be exposed automatically according to the environment used. When not checked, manual exposure can be done through the adjustment bar, which supports direct input of values in the box.



### Auto white balance

When checked, the camera will automatically white balance according to the use environment. When not checked, you can manually adjust the white balance through the adjustment bar, which supports direct input of values in the box.





**Brightness**

Manually drag the adjustment bar to adjust the image brightness.



**Contrast**

Manually drag to change the contrast between light and dark, often used in conjunction with brightness adjustment for best results.



**Saturation**

Manually drag to adjust image saturation.



**Sharpness**

Manually drag to adjust the sharpness of the image.



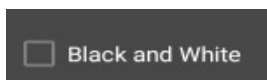
**Gama**

Manually drag to adjust the Gama of the image.



**Improve Halation**

Manually drag to adjust the halo effect of the image.



**Black and white Preview**

When checked, the preview screen is displayed in black and white mode.



**Enhance image quality**

When checked, enable image enhancement to enhance the image effect and make the image clearer and sharper.



**Resolution setting**

Only available for 12.0MP models, can switch between three resolutions:

4000x3000, 3840x2160, 2592x1944

Note: after the resolution switch is successful, the camera should be rebooted and the image should be produced normally in about 35 seconds.





**Download APP and scan for connection**

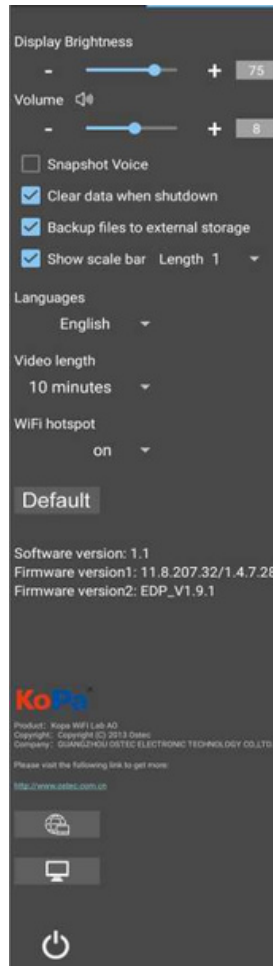
Only available for 12.0MP models, can switch between three resolutions:

4000x3000, 3840x2160, 2592x1944

Note: after the resolution switch is successful, the camera should be rebooted and the image should be produced normally in about 35 seconds.

## 3.Setting Panel

Click the setting button  in the upper left corner of the operation interface, the setting panel  will be brought up.



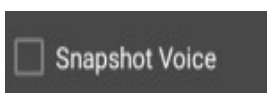
### Brightness

Manually drag the adjustment bar to adjust the overall brightness of the screen. (this function is only available for the smart all-in- one camera with display screen)



### Voice

Adjust the volume of audio playback on the display(this function is only available for the smart all-in-one camera with display screen)



### Snapshot voice

When checked, click to take a photo, there will be a prompt sound; When not checked, clicking to take a photo will not prompt the sound (this function is only available for the smart all-in-one camera with display screen)



**Clear data when shutdown**

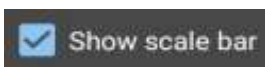
When checked, it will clear the image, video and other data captured by the application after shutdown. If not checked, the data such as pictures and videos captured by the APP will be saved locally after shutdown.



**Backup files to external storage**

When checked, pictures and videos taken will be saved synchronously to the external USB flash drive inserted. When the box is not checked, the images and videos taken will not be saved synchronously to the external USB flash drive inserted and need to be copied manually.

Note: If there is no access to the external USB flash drive, this function is not valid until the external USB flash drive is accessed.

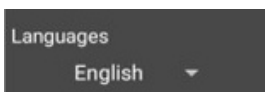


**Show scale bar**

When checked, it will clear the image, video and other data captured by the application after shutdown. If not checked, the data such as pictures and videos captured by the APP will be saved locally after shutdown.

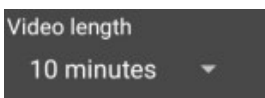


**Length**



**Languages**

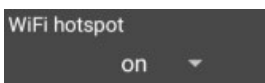
APP interface language switch.



**Video length**

There are three options for setting a time limit :10 minutes, 30 minutes, and 60 minutes.

Note: avoid excessive memory capacity due to too long recording time. Default is 10 minutes.



**WiFi hotspot**

WiFi hotspot on and off settings. It is turned off by default. After turning off the "WiFi hotspot", users cannot scan the code to preview the image.



**Default**

When checked, the system will restore the factory settings.

Note: it takes about 4 minutes to restore the factory settings. Do not power off during the recovery process, otherwise the system will fail to start due to abnormal conditions.



**Connect to the Internet**

Connect to the wireless Internet (only 5G wireless Internet signal is supported), enter the current connected 5G network password, and click "browser" to directly open the browser to surf the Internet.



Open the operating system desktop.



## 4. Annotations, Measurement Shortcut Toolbar



### 4.1 Shortcut buttons



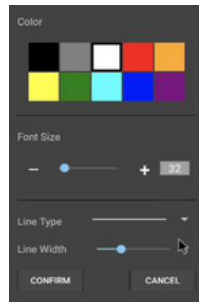
**Settings**

Bring up image attribute adjustment toolbar and panel



**Color settings**

Bring up the palette to set the color of drawing tool and text. Font size, line type and line width can be set.



**Color settings**



**Radius drawing circle measuring**



**Image flip**



**Rectangular measuring**



**Drawing**



**Rectangular measuring**



**Arrow**



**Select object tool, support single, multiple selection**



**Oval**



**Undo**



**Input text**



**Redo**



**Calibration setting table**



**After selecting an object, clicking this button will delete the object**



**Linear measuring**

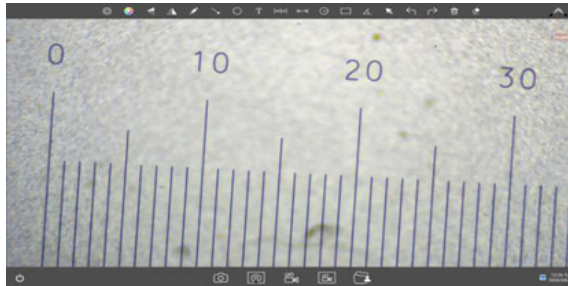



**Eraser tool for erasing drawing objects**



## 4.2 Calibration and measurement

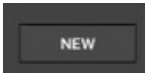
(1) Place the calibration scale within the microscope's field of view.



(2) Click  to bring up calibration table shown as below:

Name	Length	Unit	pixels	Select
_4X	1000.0	µm	602.8	<input checked="" type="checkbox"/>

NEW EDIT DELETE EXIT

(3) Click "New" 

Name \_\_\_\_\_

Length \_\_\_\_\_

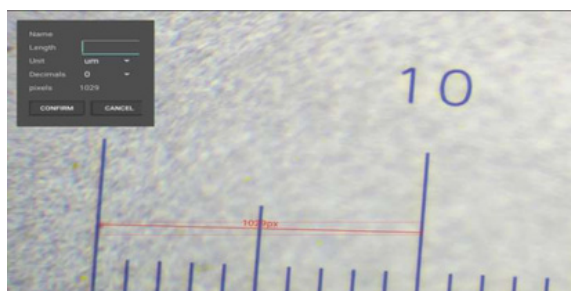
Unit **µm** ▼

Decimals **0** ▼

pixels 100

CONFIRM CANCEL

(4) Draw on the ruler, the pixels are automatically entered as shown below.



(5) Enter the name, the actual length of the calibration scale, and select the unit. Click "Confirm" to complete the calibration. Select calibration value.

Name	Length	Unit	pixels	Select
_100X	100.0	µm	2371.0	<input type="checkbox"/>
4X	10.0	um	1029.0	<input checked="" type="checkbox"/>

NEW EDIT DELETE EXIT

The calibration table below supports the re-editing and deletion of the selected calibration values. Click "EXIT" after selecting, and then use the measurement tool to measure.

## 5. Snapshot, screenshot, record, screen record, folder shortcut toolbar



**Snapshot**

Click to record the entire screen



**Screenshot**

Click to enter image and video management



**Record**

Click to record the real-time image



**Screen record**

Click to record the entire screen

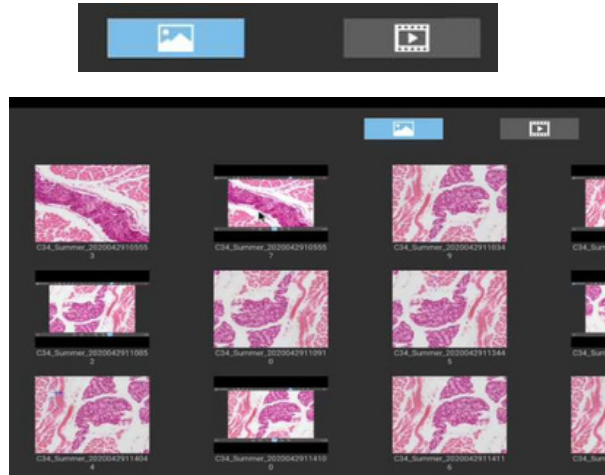


**Folder**

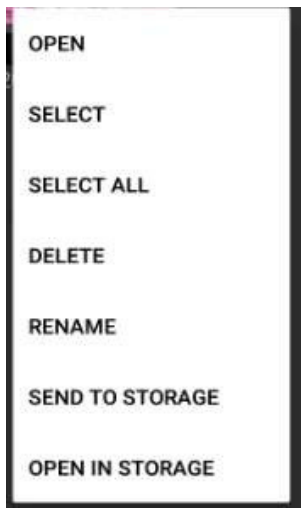
Click to enter image and video management

## 6. Folder Management

1) After entering folder management, the top of the interface can switch to images and videos gallery.



2) Right - click on a single image or single video to display the following menu



<b>Open</b>	Enlarge this picture/video to show/play
<b>Select</b>	Select this image/video
<b>Select all</b>	Select all images // videos in the folder
<b>Delete</b>	Delete the selected image/video.
<b>Rename</b>	Rename the selected image/video.
<b>Send to storage</b>	Sends the selected image/video to the storage device.
<b>Open in Storage</b>	Open the currently selected image/video in the location where the USB flash drive is stored.

Specifications are subject to change without any obligation on the part of the manufacturer.

---



## LANOPTIK TECHNOLOGIES LTD

No. 72 Hongjing Street, Lejia Road, Baiyun District, Guangzhou, China. 510400

Phone: +86 20 3898 6017 | Fax: +86 20 3847 6076

Website: <http://www.lanoptik.com> | Email: [info@lanoptik.com](mailto:info@lanoptik.com)