

Articulating HDMI Digital Microscope

HD61

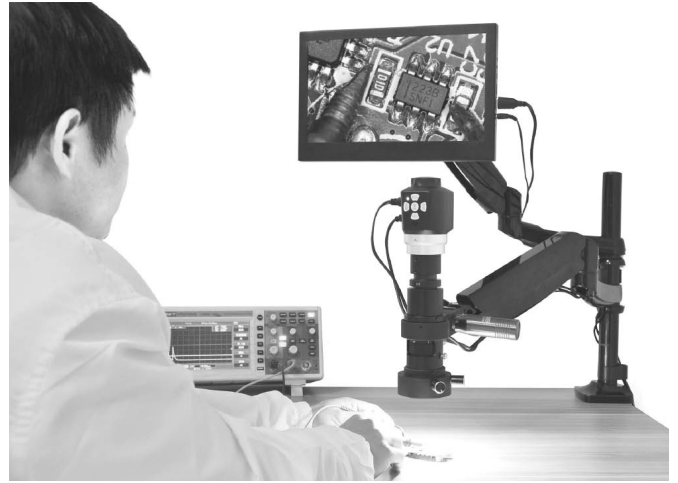
Description

HD61 is a high-definition inspection system using a 1080p HDMI camera and a 0.7X-5X zoom C-mount lens, with a 96-LED ring-light for illumination. The 0.7X to 5X lens produces a highly-detailed image - ideal for industrial or biological inspection. The camera not only provides a live video stream to available HDMI devices such as a monitor, but it can also record HD video directly to a MicroSD card. Equipped with an articulating arm with clamp, HD61 is great for examining parts attached to a larger or awkward shaped item, this articulating arm stand comes with a clamp that can be secured to ledges up to 100mm thick.

Features

- 0.7X-5.0X zoom objective lens for C-mount
- Post manual focusing camera provides much longer working distance
- 3.5 megapixels HDMI camera, 60 fps @ 1080p
- Sharp images over a super wide field view
- Coaxial and diffuse LED cool light source
- A versatile articulating arm with clamp for covering large working area
- Measuring software Pixit Pro

360° spherical holder, dual twistlock design, easy to deal with all angles. HD61 is ideal for inspection on big objects which is not suitable for cutting sampling.



Specifications

Model	HD61
Objective Lens	0.7X~5.0X zoom lens
Mount	0.4X C-mount
Working distance	105mm
Field of view	12.9mmx17.1mm to 1.8mmx2.4mm
Camera	DM350C (3.5mp color CMOS)
Sensor details	Aptina AR0330 CMOS Sensor
Sensor size	1/3"
SNR	39 dB
Dynamic Range	69.5 dB
Sensitivity	1.4v/lux-sec(550nm)
Spectral Response	380-650nm
Frame Rate	30fps ~60fps
Exposure	Automatic, Manual
White Balance	Automatic, Manual
Software Interface	DirectShow
Capture Mode	Picture & Video (JPG and AVI)
Output Interface	HDMI / USB 2.0
Operation System	N/A, Microsoft Windows 7, 8, 10
Weight	350g
System Requirements	2GB RAM Recommended, 2Ghz+ CPU Recommended

Dimensions

